

HV SERIES VERTICAL HONING SYSTEMS



- The Barnes HV Series of Vertical Honing Machines are designed dually for general purpose and specialized applications. The modular design provides an economical platform for light duty "9 to 5" requirements and a building block for high production, automated "24/7" demands.

- The heavy duty base and column superior vibration dampening characteristics facilitates high material removal rates, precise tolerance dimensions and critical surface finish requirements as follows:

Maximum Material Removal	2.0 cu.in/min
Diameter Size	.0001"
Cylindricity	.0001"
Surface Finish	2 Ra

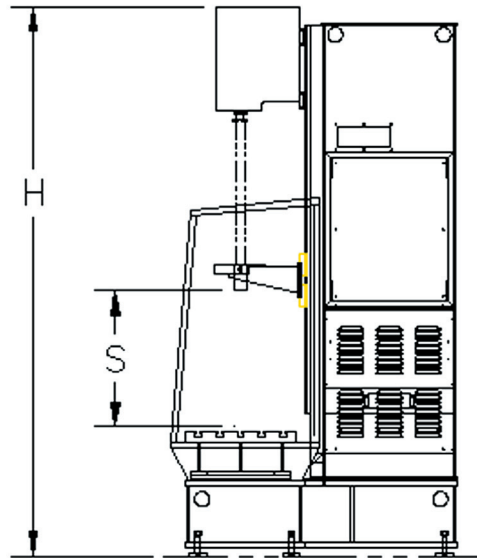
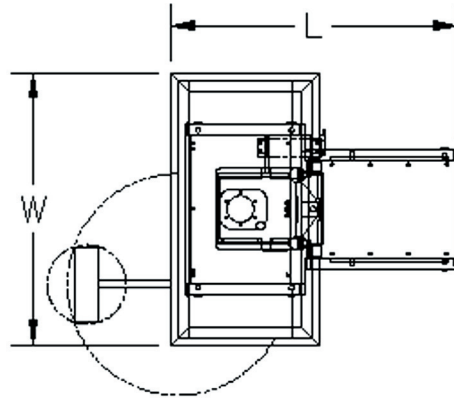
- The unique traveling head assembly and linear guideway system provides precise and repeatable accuracy. The heavy-duty integral spindle and gear reducer offer ample power and torque to remove material rapidly and efficiently. "Blind end" bore applications with relief as small as 0.075" are no problem for the linear transducer based stroke control system.
- Diameter size control is managed without the expense of sizing plugs or gages by a linear transducer arrangement. This system provides feedback directly to the expansion system to assure predictable and repeatable size control part after part.

HV SERIES STANDARD FEATURES

- Programmable Controller
- Operator Interface with "Menu" Driven Part File System
- Heavy Duty Base and Column Precision Linear Guideway System
- Hydraulic Hone Expansion System with Linear Transducer for Diameter Size Control
- Traveling Head Assembly with Self Contained Spindle and Gear Reducer
- Variable Speed Spindle Drive Arrangement for Automatic RPM Selection

AVAILABLE OPTIONS

- In Process Gauging
- Servo Hone Expansion
- Rough and Finish Capability for Applications with Excessive Stock Removal and/or Plateau Surface Finish Requirements
- Automatic Load/Unload Capability
- Modular Construction Facilitates Single or Multiple Spindle Configuration
- Stroke Lengths up to 64"
- Lateral or Rotary Index Table



SPECIFICATIONS	HV-2000	HV-5000	HV-8000
Bore Diameter	.250"/2	2.0"/7"	5"/18"
Spindle HP (Opt.)	2HP (3 HP)	7.5HP (10 HP)	15HP (25 HP)
(S) Stroke Length (Opt.)	15" (42")	32" (48", 64")	32" (64", 76")
Spindle Speeds	300 - 3000 RPM	50 - 500 RPM	30 - 300 RPM
(H) Height	92" (128")	128" (158", 185")	128" (185", 205")
(W) Width	52"	64"	80"
(L) Length	50"	68"	88"
Weight	4,000 Lbs.	7,000 Lbs.	15,000 Lbs.